



## Green 150

Janitorial trolley with small base with 100 mm wheels and Rilsan varnished metal frames



**Bag and lid not included**

### Technical information

code	notes	cm	L	pcs	kg	m <sup>3</sup>
<b>0R003150</b>		↕ 123 ↕ 65 ↕ 110	120	1	21,62	0,247

### Component list

cod.	description	qty
00003591	Adjustable handle holder with hose hook, without screws, ø 22 mm, green	1 pc
00003724	Tec jaw wringer, green	1 pc
000B3501	Bucket with handle, 15 L, blue	1 pc
000B3502	Bucket with handle, 12 L, blue	1 pc
000R3501	Bucket with handle, 15 L, red	1 pc
000R3502	Bucket with handle, 12 L, red	1 pc
L320050	Rilsan stanchion, white	2 pcs
L360510	Rilsan wringer support, white	1 pc
S030310	Small central basin, 27x44 cm, for 2x12 L buckets	2 pcs
S070310	Foldable bag holder for Green trolleys, capacity 120 L	1 pc
T030370	Bag holding plate with blue nameplate	1 pc
T091302	Small Green base, 87x50 cm, with ø 100 mm wheels	1 pc

## SYSTEM

Multipurpose polypropylene and metall trolley, customisable to meet every cleaning need  
 Ideal for cleaning medium-large areas where it is necessary to rinse the mop, with space-saving needs thanks to the foldable bag holder



## GREEN BOX



Components made with certified recycled plastic PSV - Plastic Second Life



**Efficient:** suitable for removing wet, greasy or stubborn dirt in areas where rinsing is required, separates the cleaning solution from the rinsing water and is equipped with colour-coded buckets made from 50% recycled plastic



**Carbon Footprint Systematic Approach:** greenhouse gas emissions for each stage of the life cycle of this product have been calculated with ICMQ certified software  
Quantifying the Carbon Footprint of a product (CFP) enables an environmentally conscious and responsible choice



**Eco-friendly:** components in polypropylene, stainless, robust and completely recyclable

## Advantages

- **Long durability:** wringer studied for a long life cycle of the product, best seller for TTS for more than 20 years
- **Effective:** wringer studied with a mechanism that brings jaws to the bottom ensuring performance without the need of reductions
- **Shock-resistant:** polypropylene, naturally stainless and elastic, guarantees shockproof performance
- **Modular:** components and accessories allow you to customize the trolley for every need, making it easy to update or repair at any time
- **Easy to maintain:** the smooth surfaces and the absence of cavities facilitate cleaning and guarantee a high level of hygiene
- **Customisable:** two labels on the base of the trolley can carry the logo of the cleaning company

## Compatibility

Compatible with flaps, pockets system and mops

## Material

Polypropylene - Stanchions: Rilsan varnished steel

Packaging: [click here to see the environmental labelling of packaging](#)



## Features

Wringer complete with front anti-spurt panel  
Wringer with handle holder to fix the handle during transport

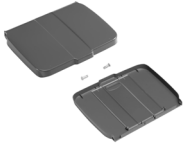
## Related products



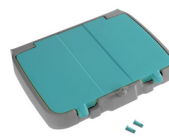
120 L plastified bag



120 L plastified bag with zip



Lid 120 L bag holder with check-list holder



Double bottom lid for 120 L bag holder



Two sided floor sign - Message:  
"CAUTION WET FLOOR"

## Product options



Green 30